



Organisational Charts

February 2010

Contents

Table

1	Management Team
2	Office of the Chief Executive
2.1	Regeneration and Dover Pride
2.2	Leadership Support
2.3	Secretarial Support
3.	Governance
3.1	Legal
3.2a	Democratic Services
3.2b	Democratic Services
3.3	East Kent Audit Partnership
3.4	Performance and Risk
3.5	East Kent Human Resources Partnership
4	Finance and ICT
4.1a	Accountancy
4.1b	Procurement and Income
4.2	Information and Communication Technology
5	Property, Leisure and Waste Management
5.1a	Property Services
5.1b	Property Services
5.2	Waste
5.3	Parking and CCTV
5.4	Leisure Services and WCCP

Table

6	Business and Community Transformation
6.1a	Benefits
6.1b	Benefits
6.2a	Revenues, NNDR, Council Tax and Enforcement
6.2b	Revenues, NNDR, Council Tax and Enforcement
6.3a	Customer Services
6.3b	Customer Services
6.4	Community Development and Health & Well-Being
7	Housing, Culture and Community Safety
7.1a	Housing
7.1b	Housing
7.1c	Housing
7.2	Private Sector Housing
7.3	Museums and Tourism
7.4	Anti-Social Behaviour
8	Development and Public Protection
8.1	Planning
8.2	Conservation
8.3	Forward Planning
8.4	Building Control
8.5	Environmental Health

Table 1

Management Team

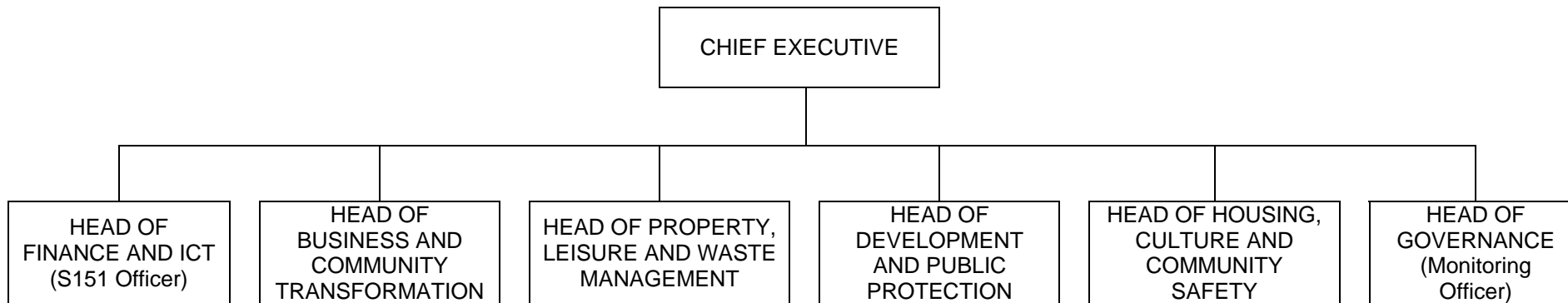


Table 2.1

Office of the Chief Executive (Regeneration)

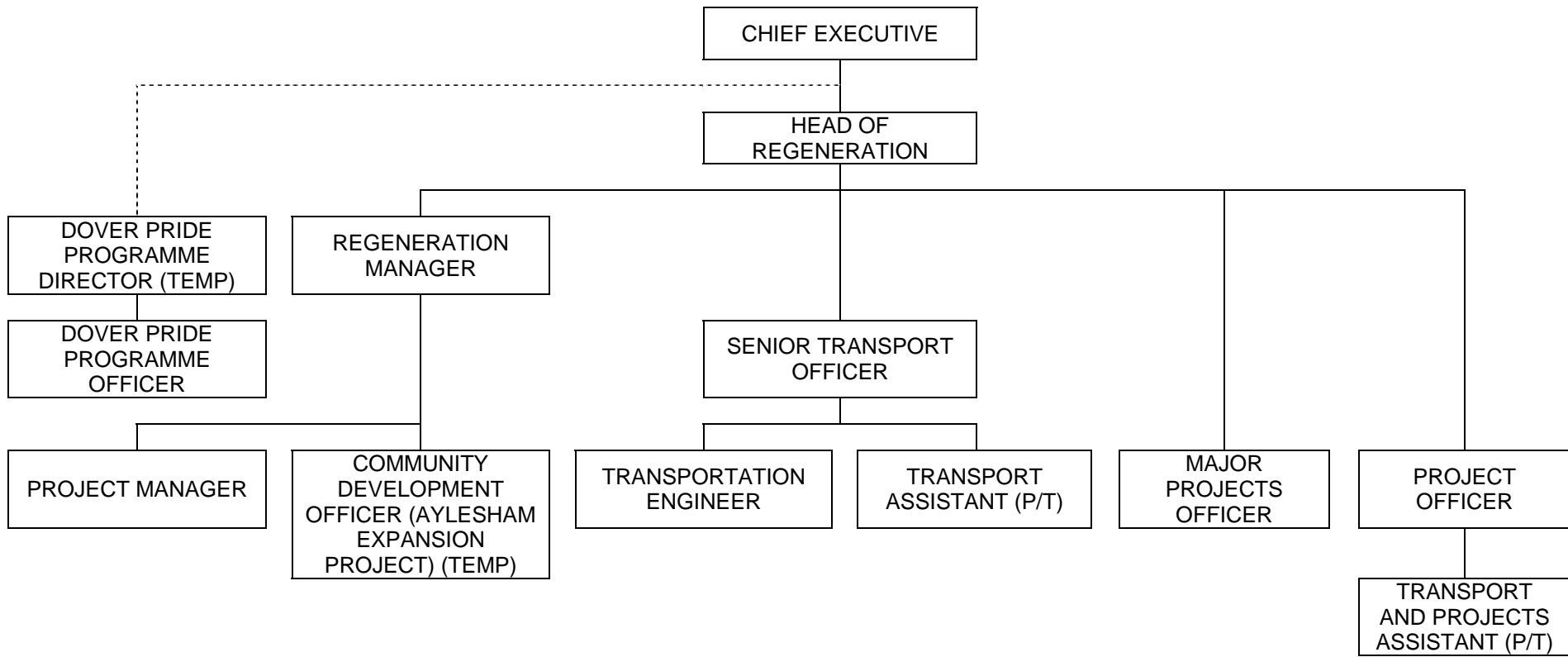


Table 2.2

Office of the Chief Executive (Leadership Support)

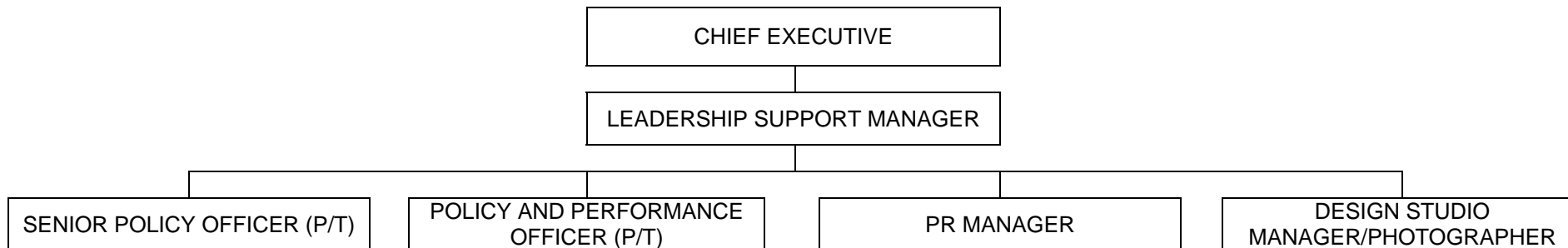


Table 2.3

Office of the Chief Executive (Secretarial Support)

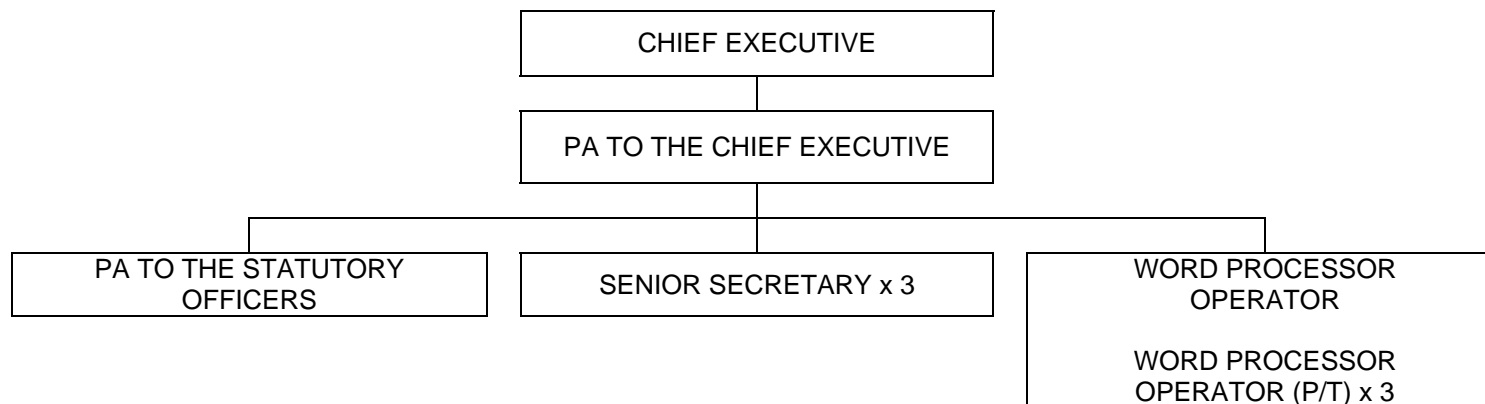


Table 3.1

Governance (Legal)

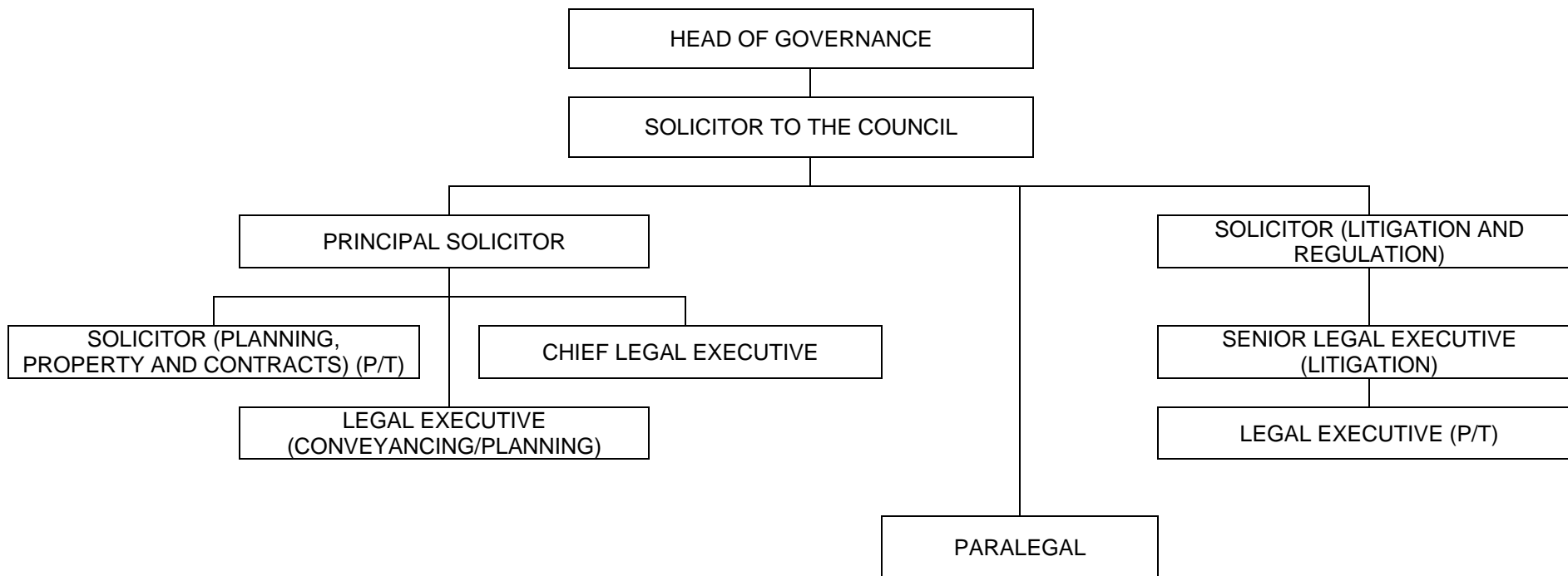


Table 3.2a

Governance (Democratic Services)

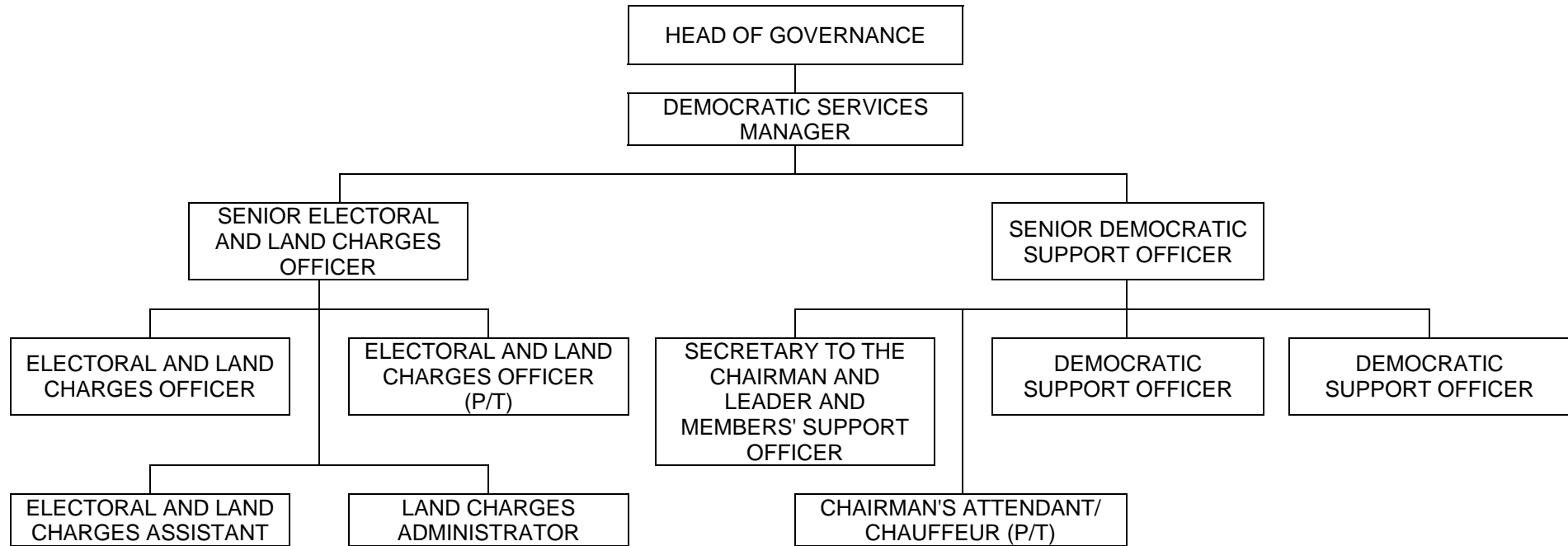


Table 3.2b

Governance (Democratic Services)

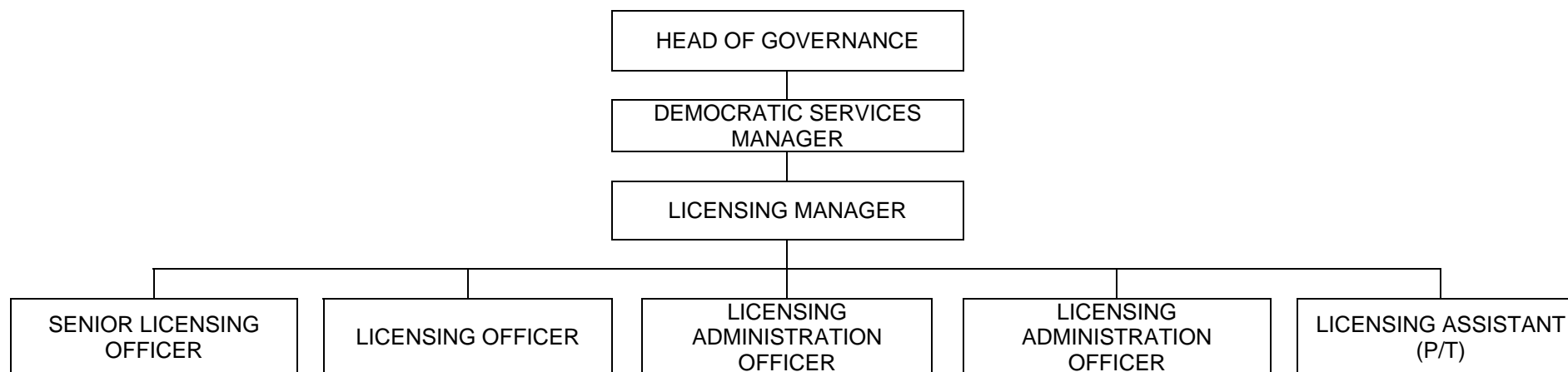


Table 3.3

Governance (Audit)

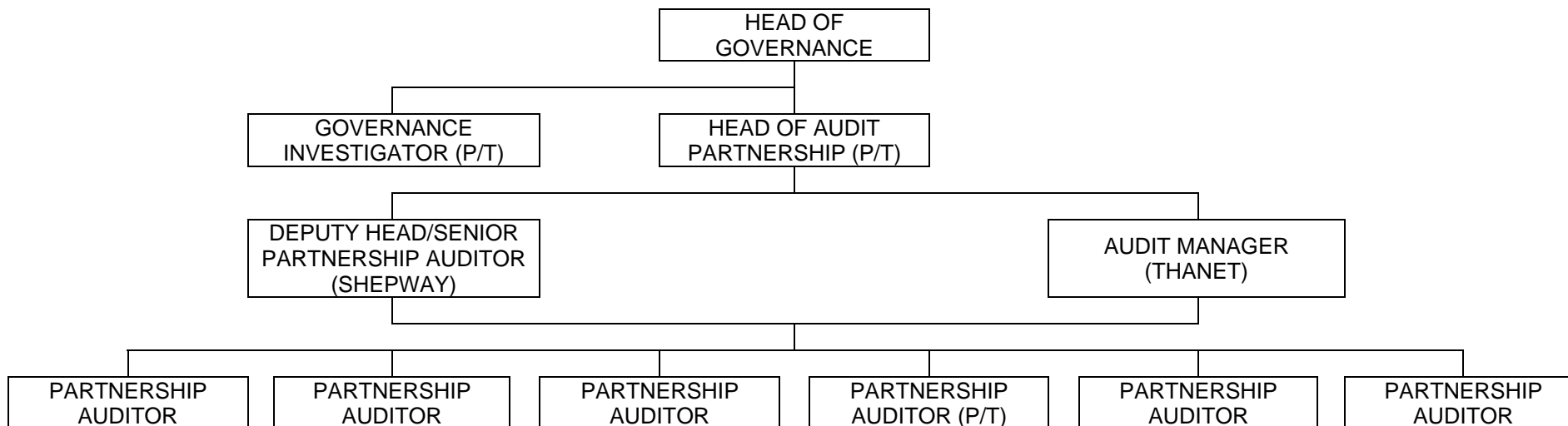


Table 3.4

Governance (Performance and Risk)

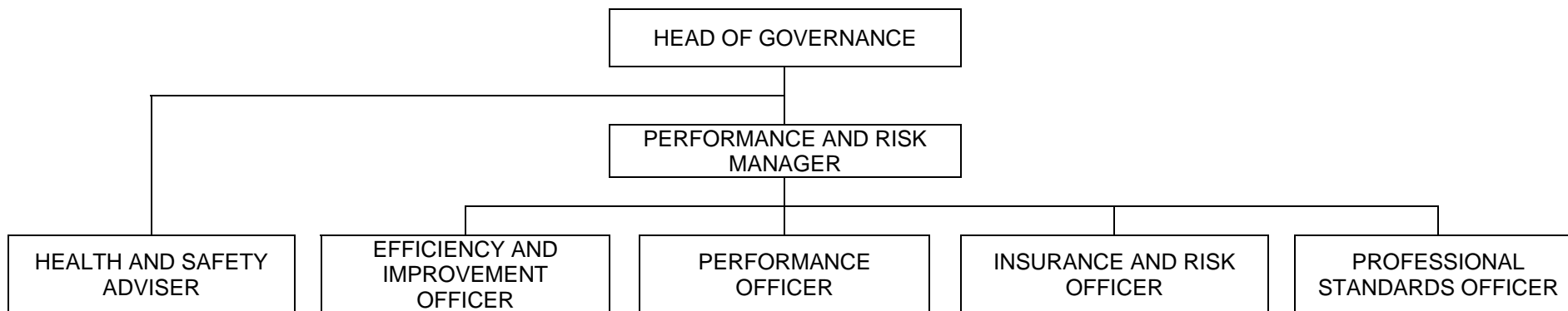


Table 3.5

Governance (East Kent Human Resources Partnership)

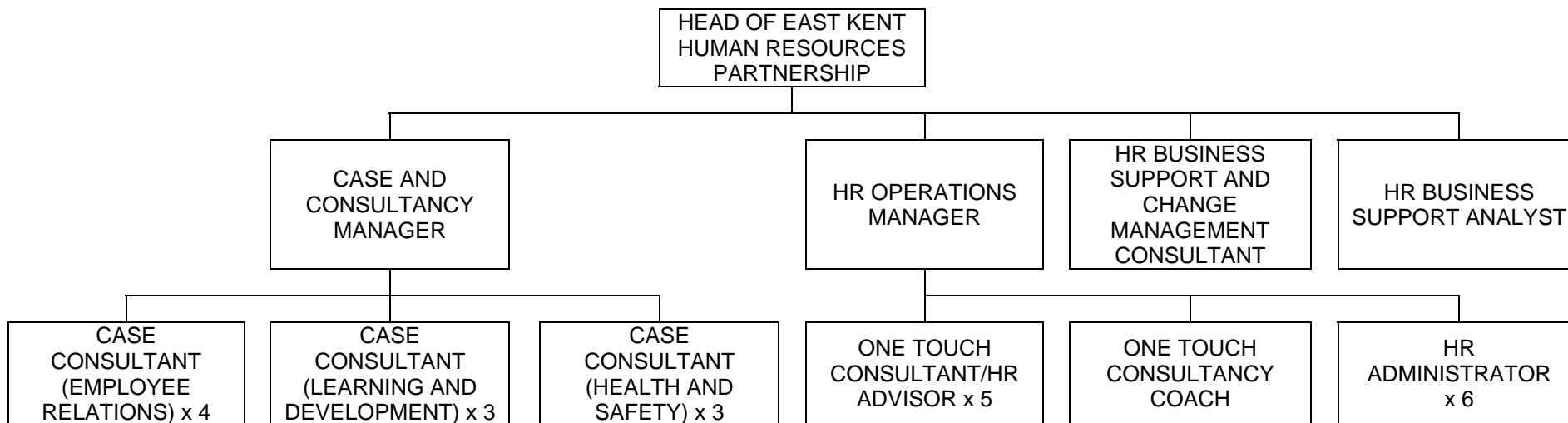


Table 4.1a

Finance and ICT (Accountancy)

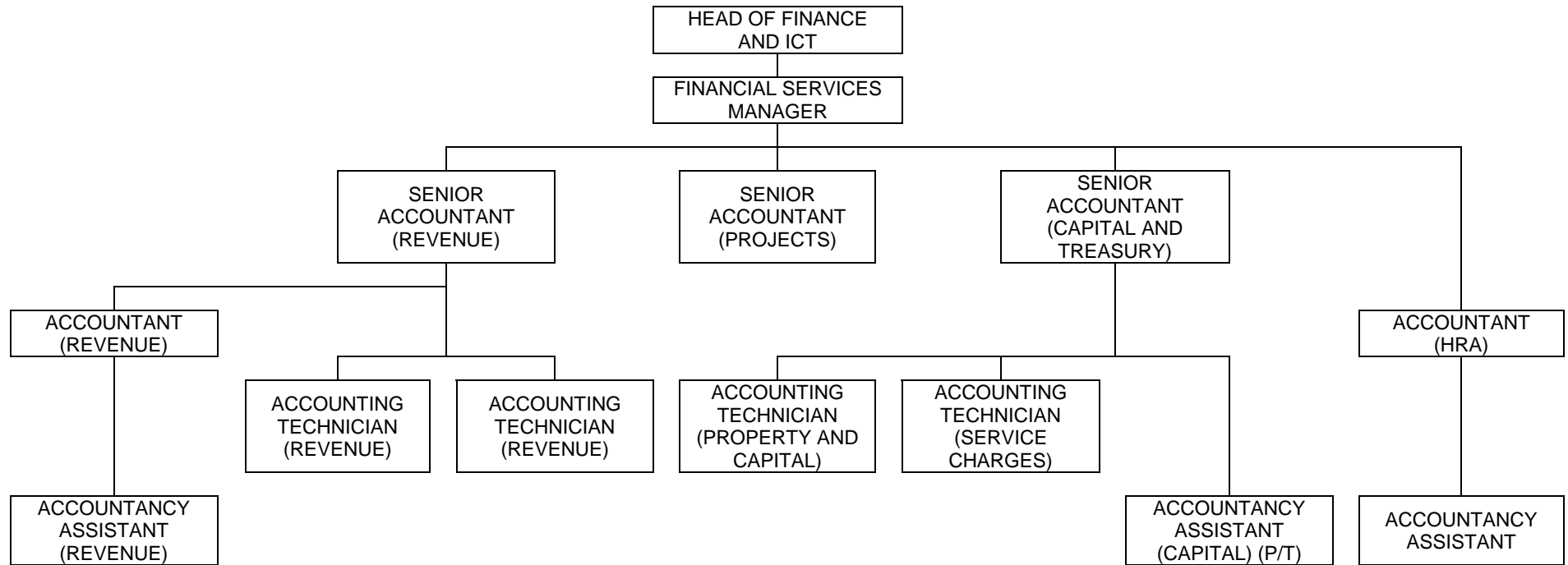


Table 4.1b

Finance and ICT (Income, Procurement and Payroll)

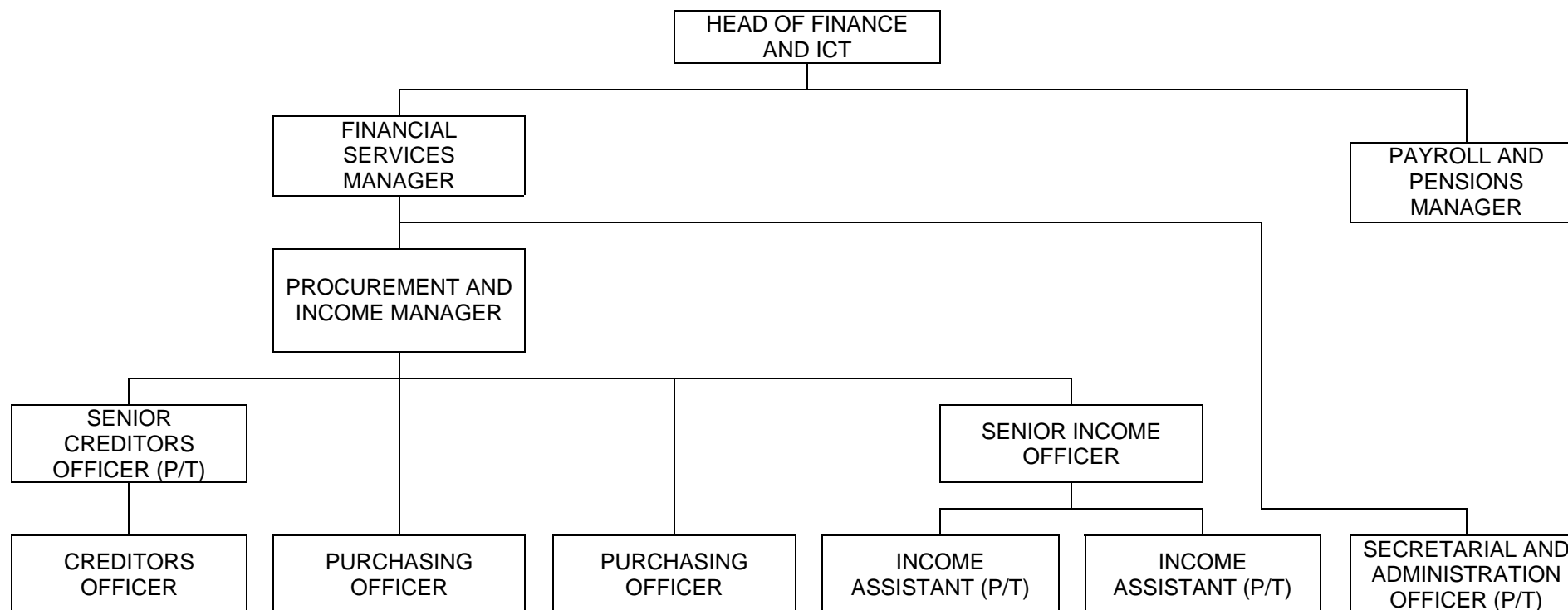


Table 4.2

Finance and ICT (Information and Communication Technology)

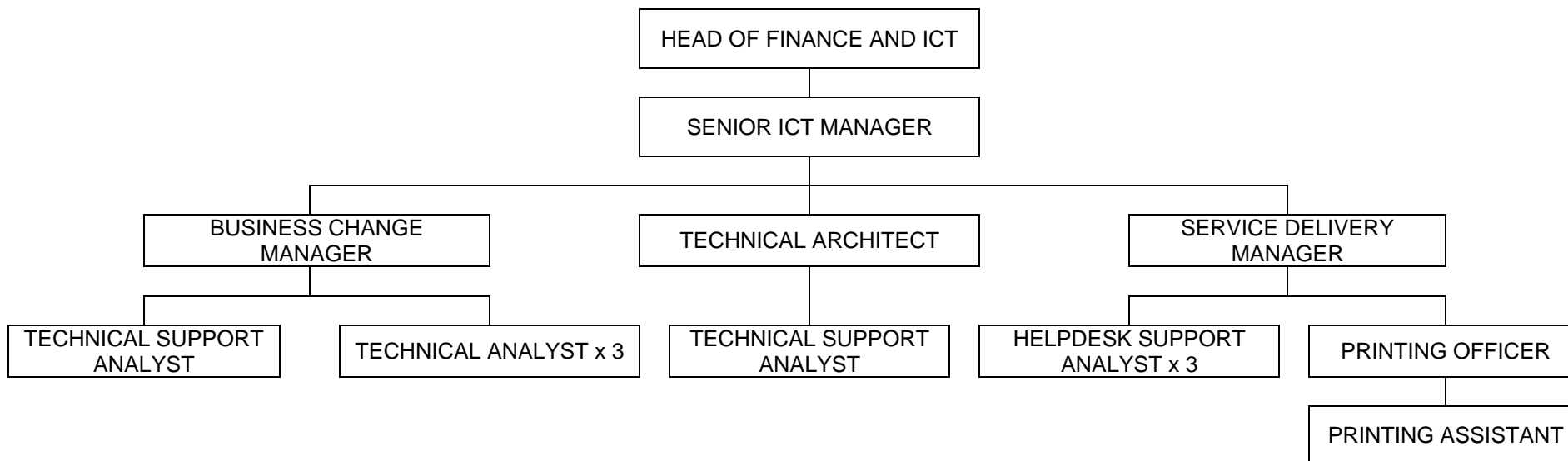


Table 5.1a

Property, Leisure and Waste Management (Property Services)

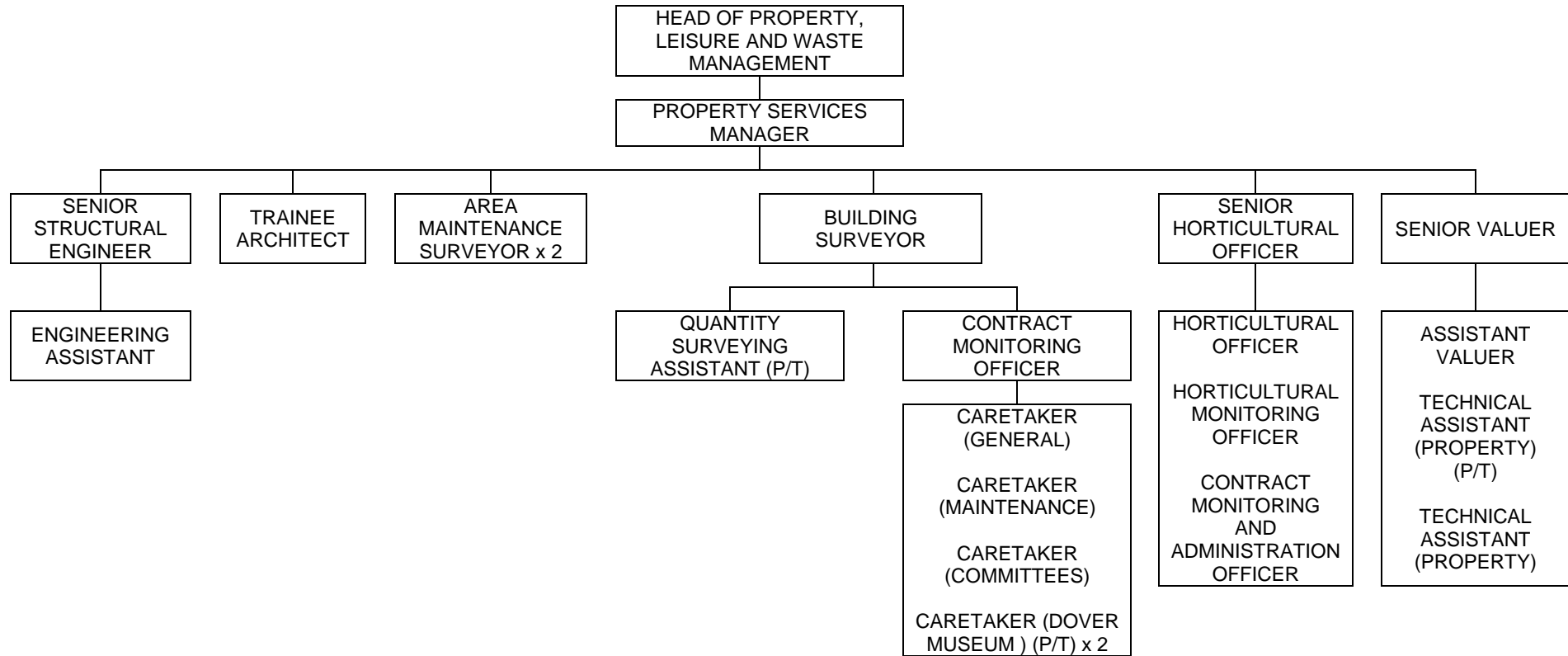


Table 5.1b

Property, Leisure and Waste Management (Property Services)

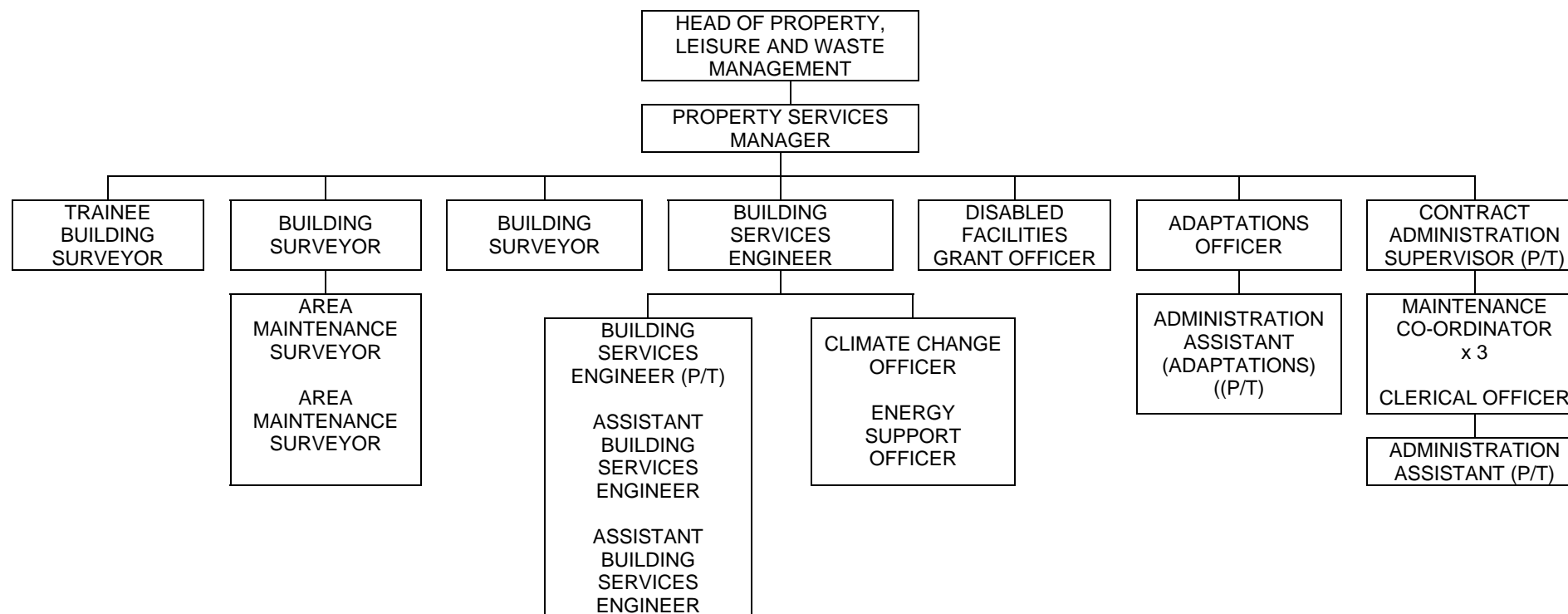


Table 5.2

Property, Leisure and Waste Management (Waste)



Table 5.3

Property, Leisure and Waste Management (Parking and CCTV)

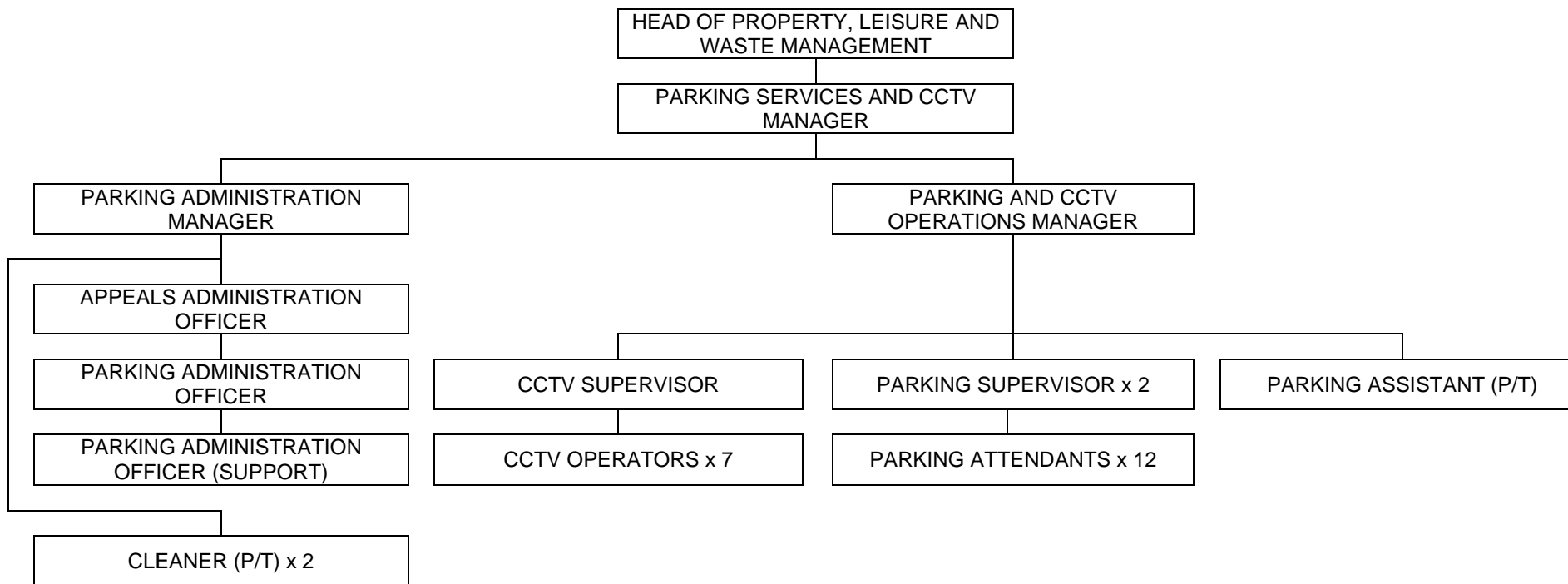


Table 5.4

Property, Leisure and Waste Management (Leisure Services and WCCP)

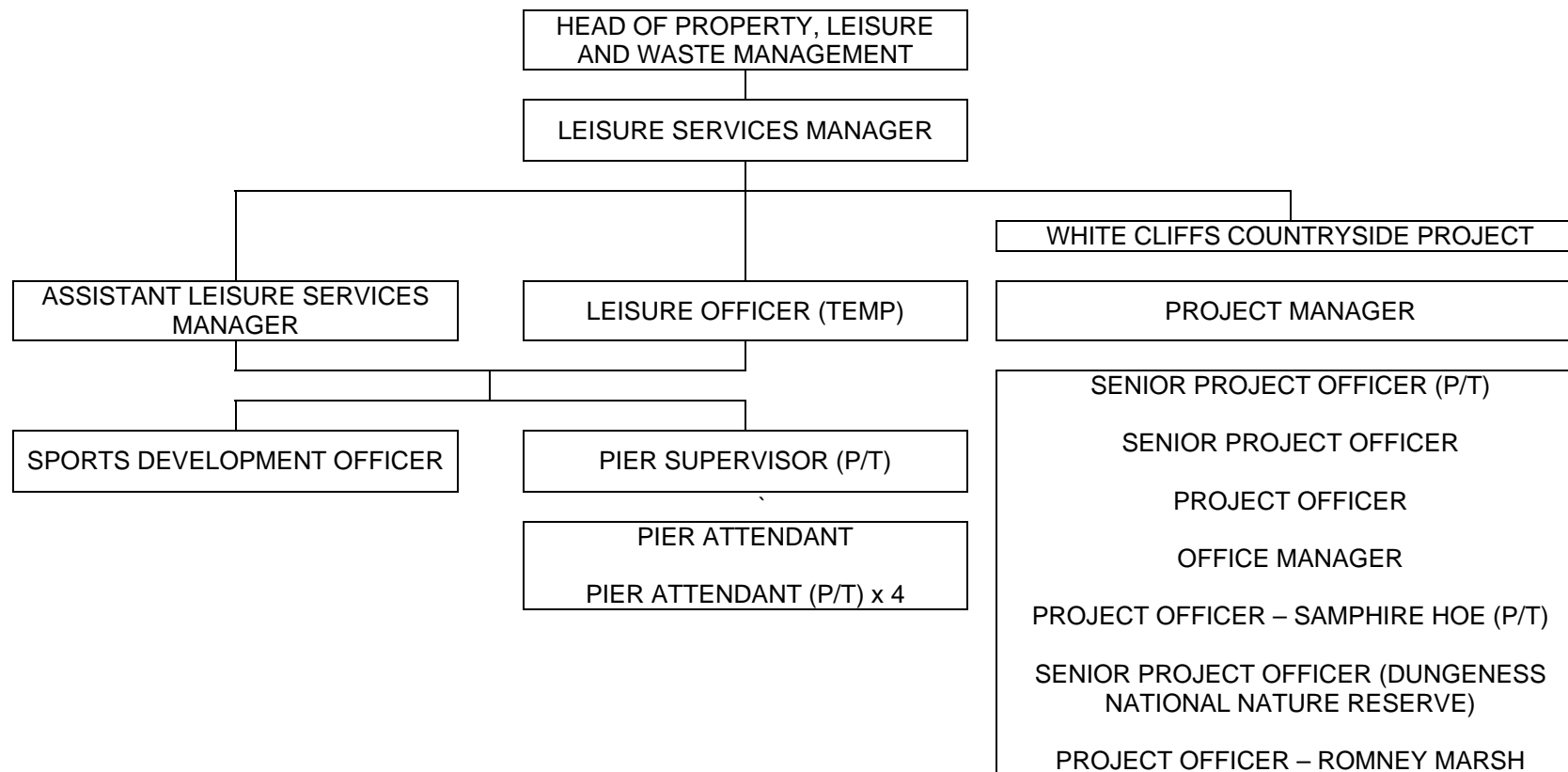


Table 6.1a

Business and Community Transformation (Benefits)

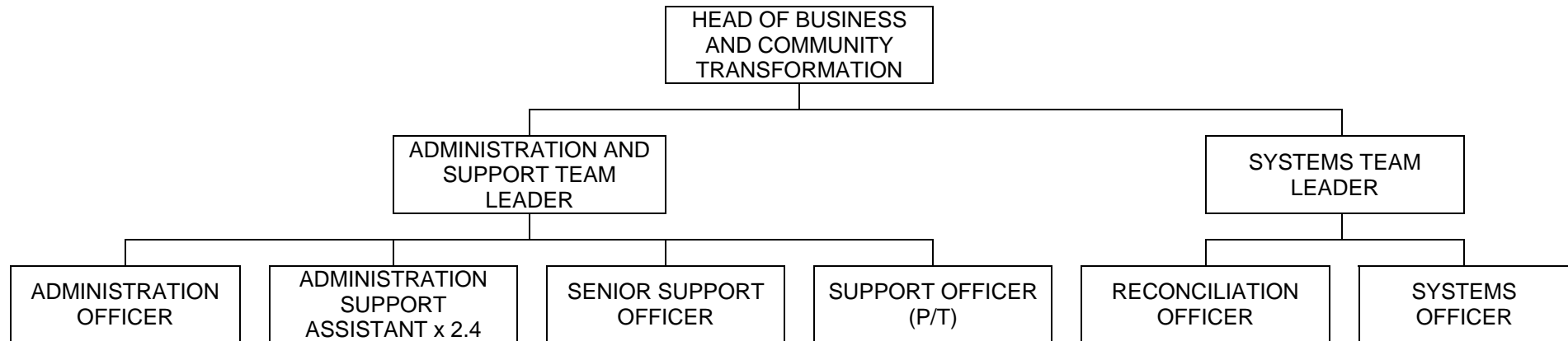


Table 6.1b

Business and Community Transformation (Benefits)

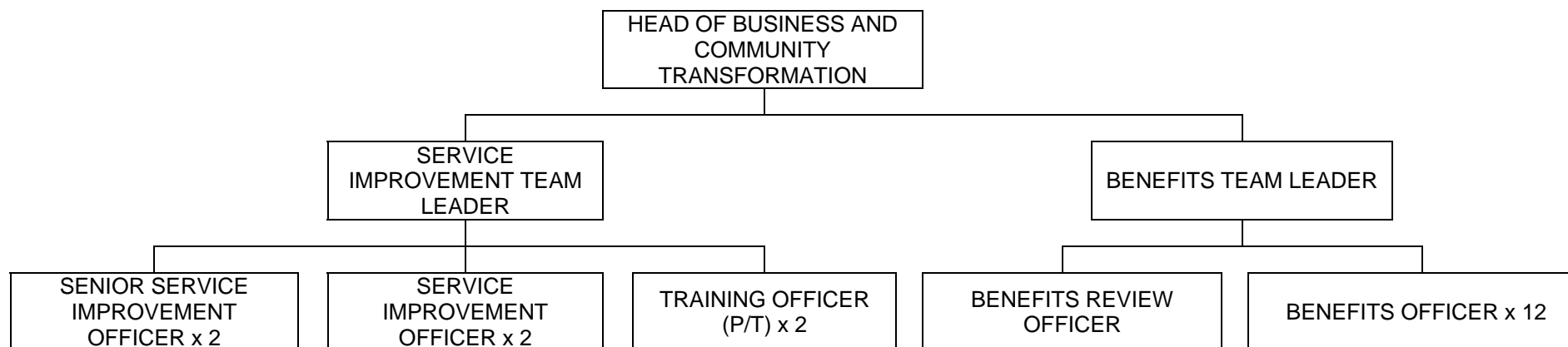


Table 6.2a

Business and Community Transformation (Revenues, NNDR, Council Tax and Enforcement)

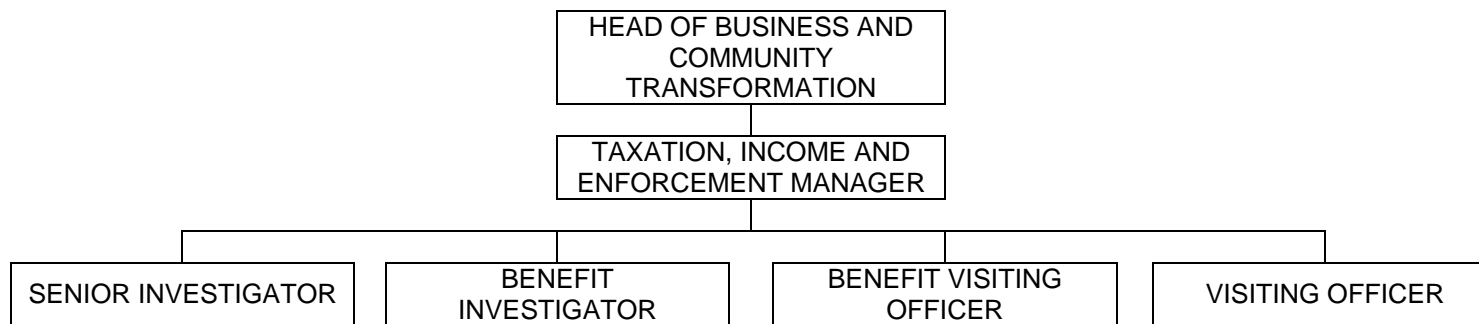


Table 6.2b

Business and Community Transformation (Revenues, NNDR, Council Tax and Enforcement)

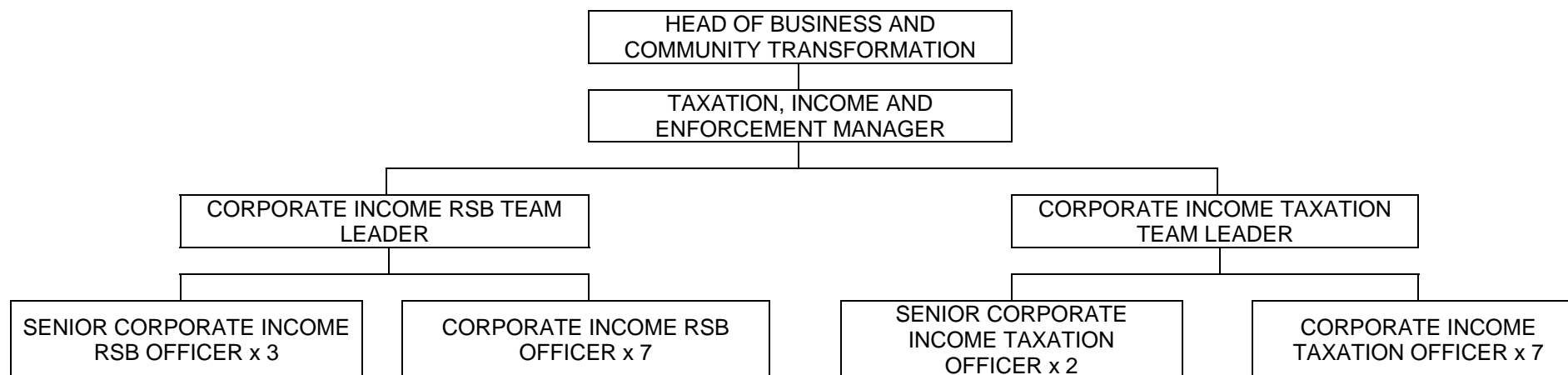


Table 6.3a

Business and Community Transformation (Customer Services)

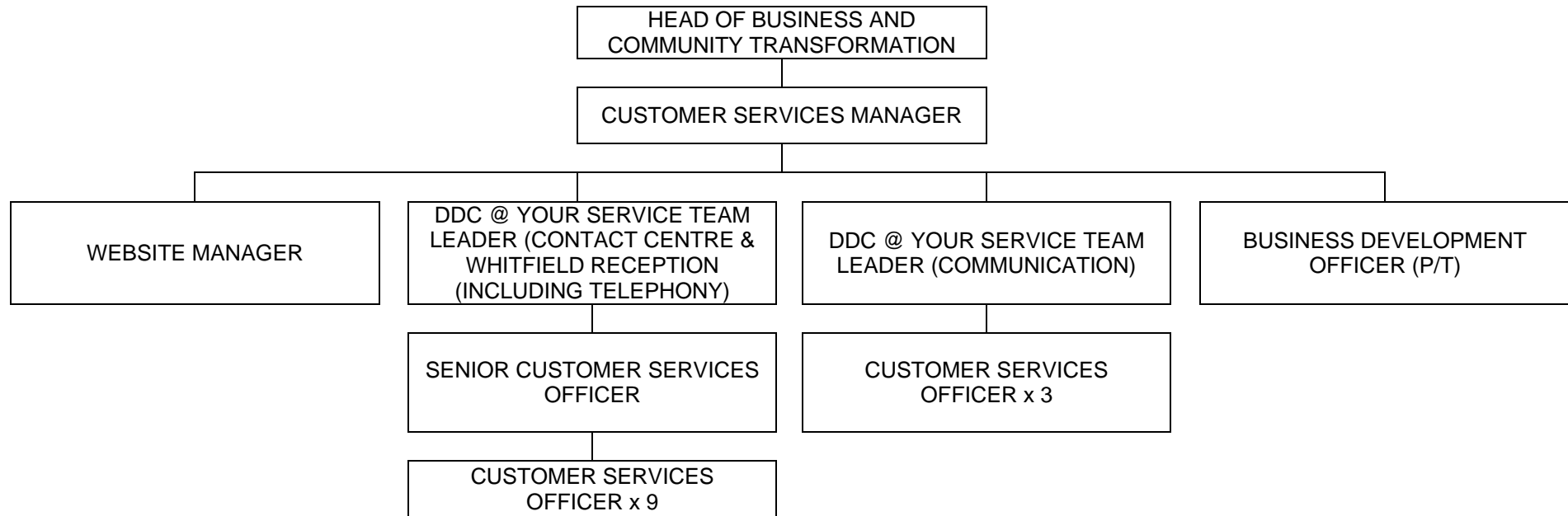


Table 6.3b

Business and Community Transformation (Customer Services)

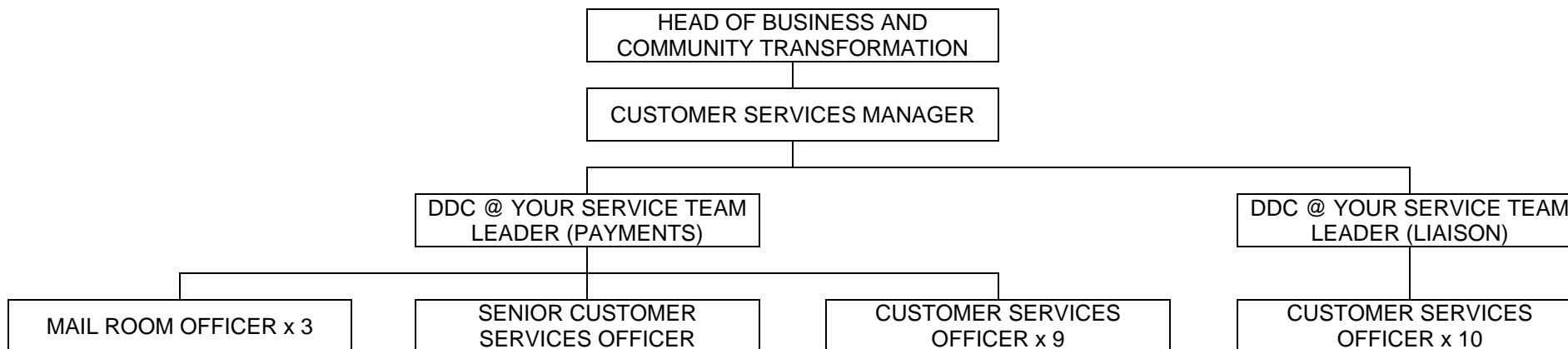


Table 6.4

Business and Community Transformation (Community Development)

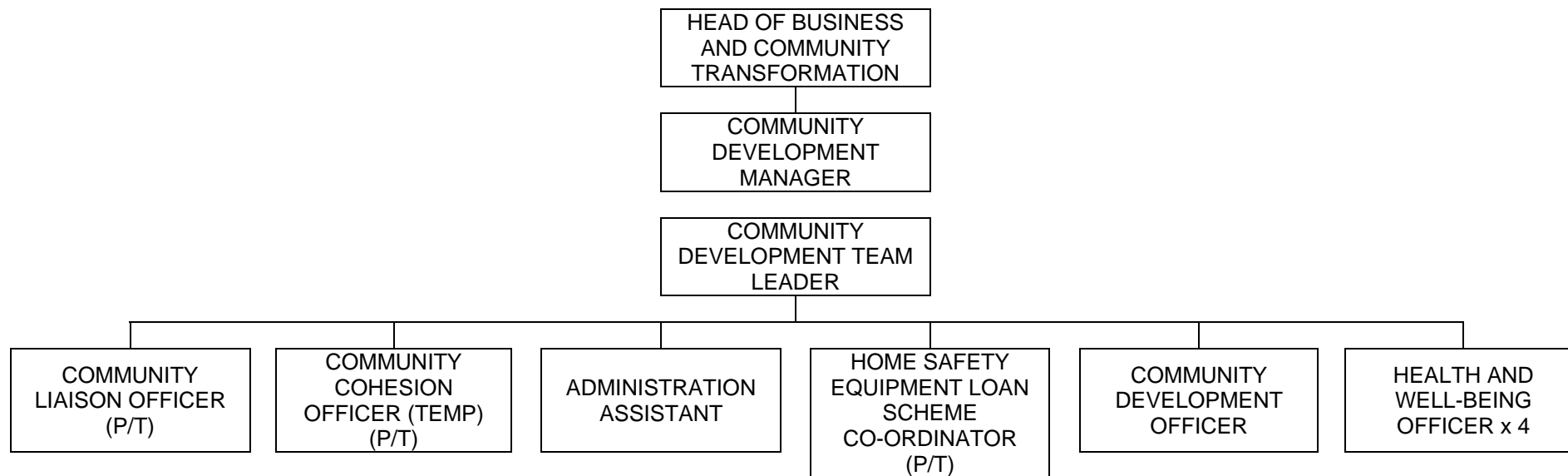


Table 7.1a

Housing, Culture and Community Safety (Housing)

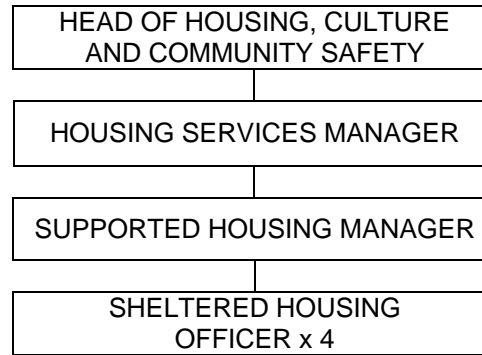


Table 7.1b

Housing, Culture and Community Safety (Housing)

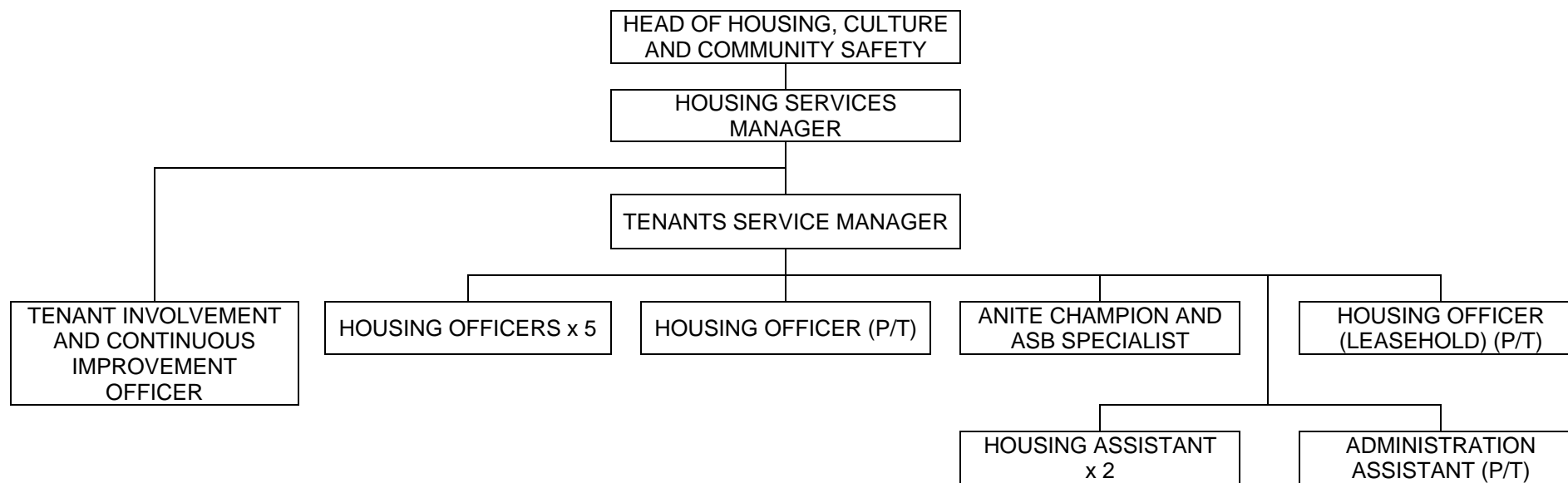


Table 7.1c

Housing, Culture and Community Safety (Housing)

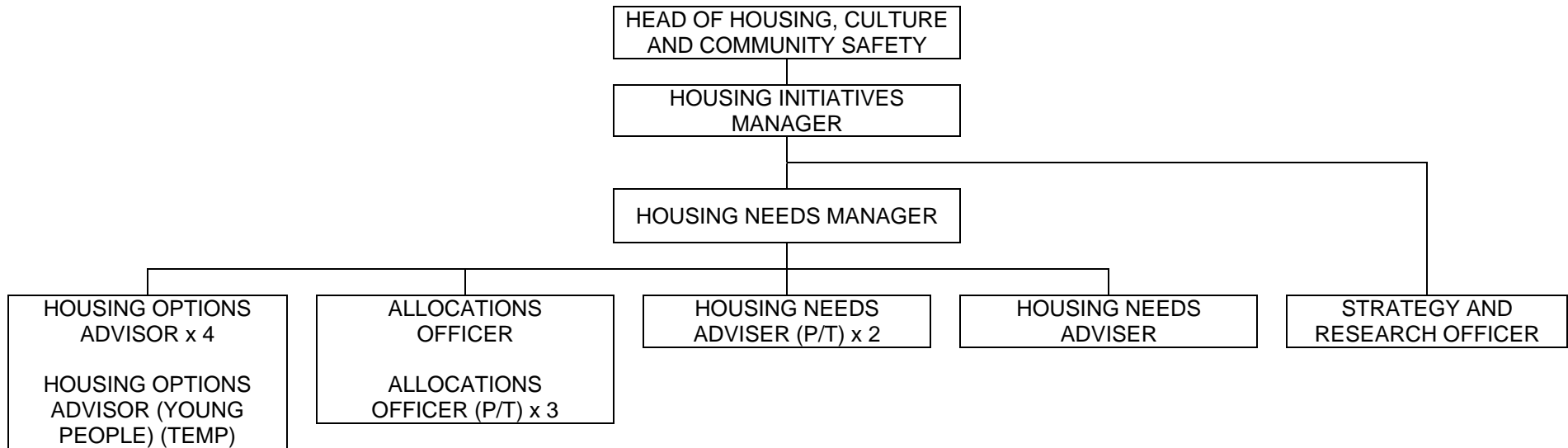


Table 7.2

Housing, Culture and Community Safety (Private Sector Housing)

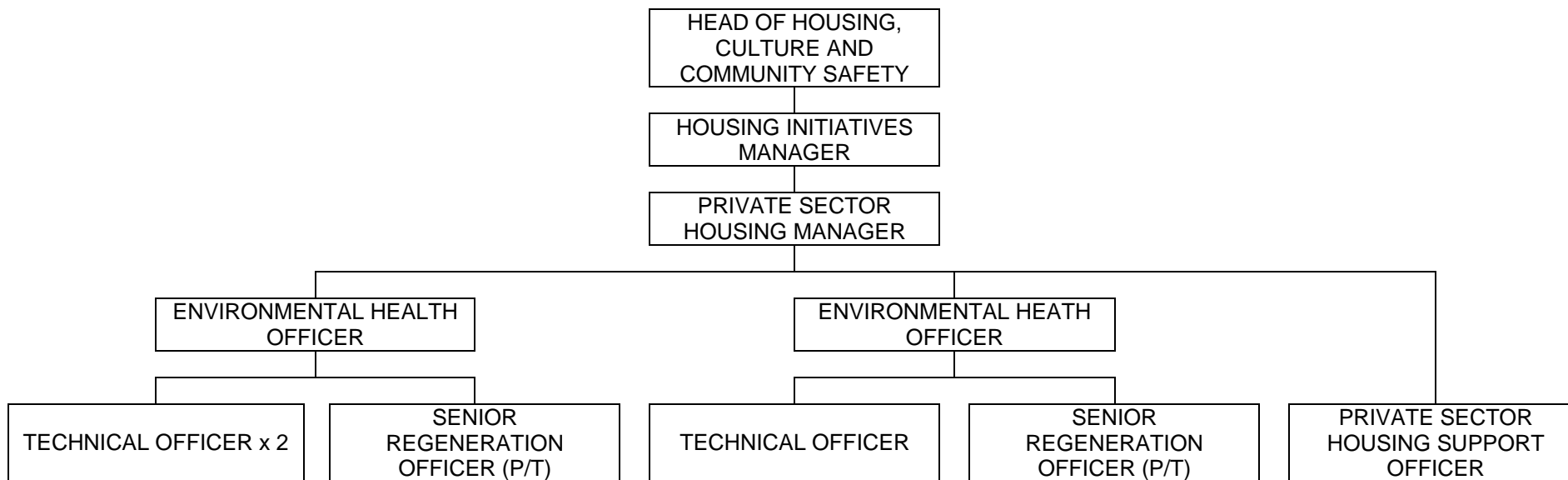


Table 7.3

Housing, Culture and Community Safety (Museums and Tourism)

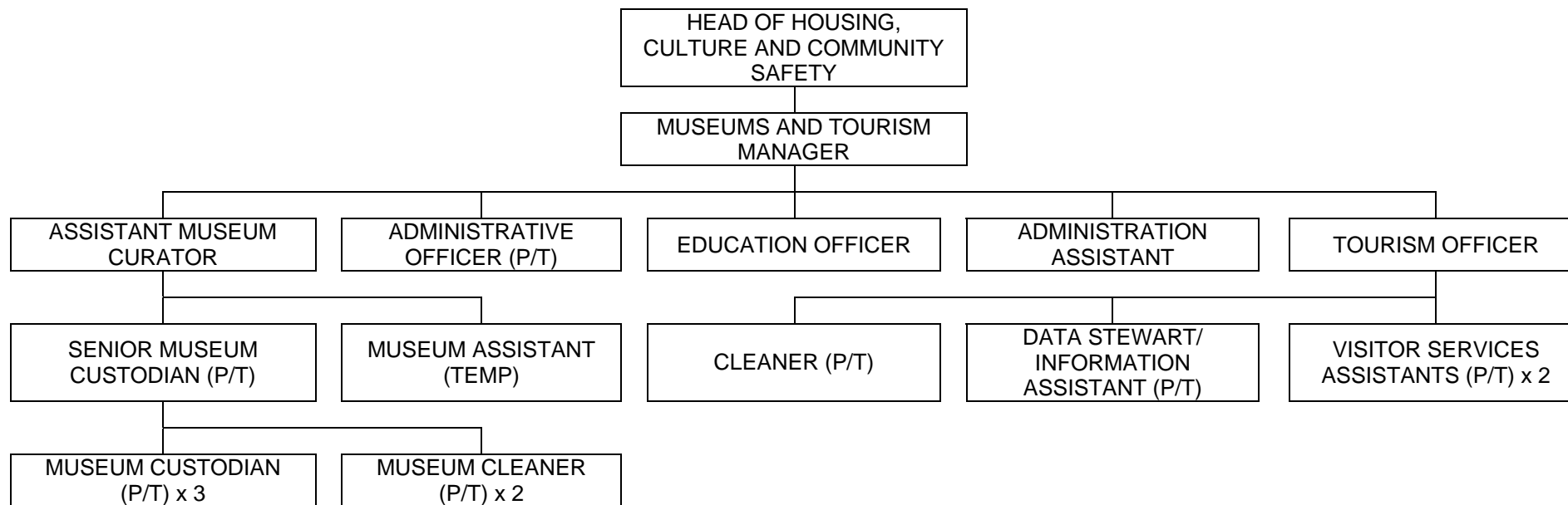


Table 7.4

Housing, Culture and Community Safety (Anti-Social Behaviour and Community)

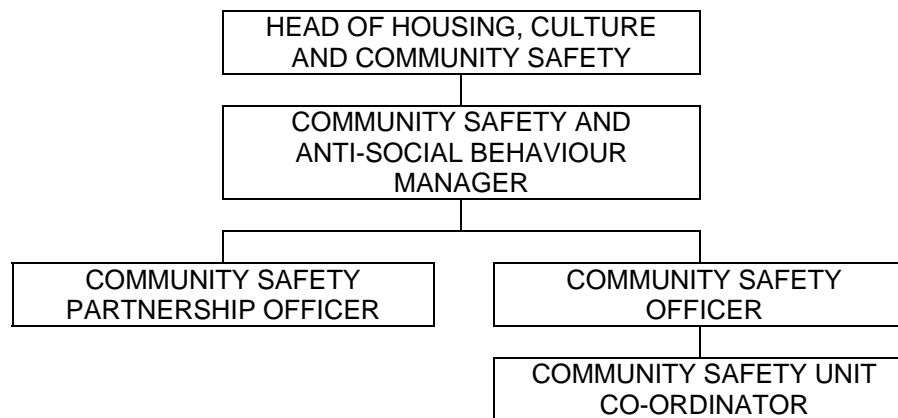
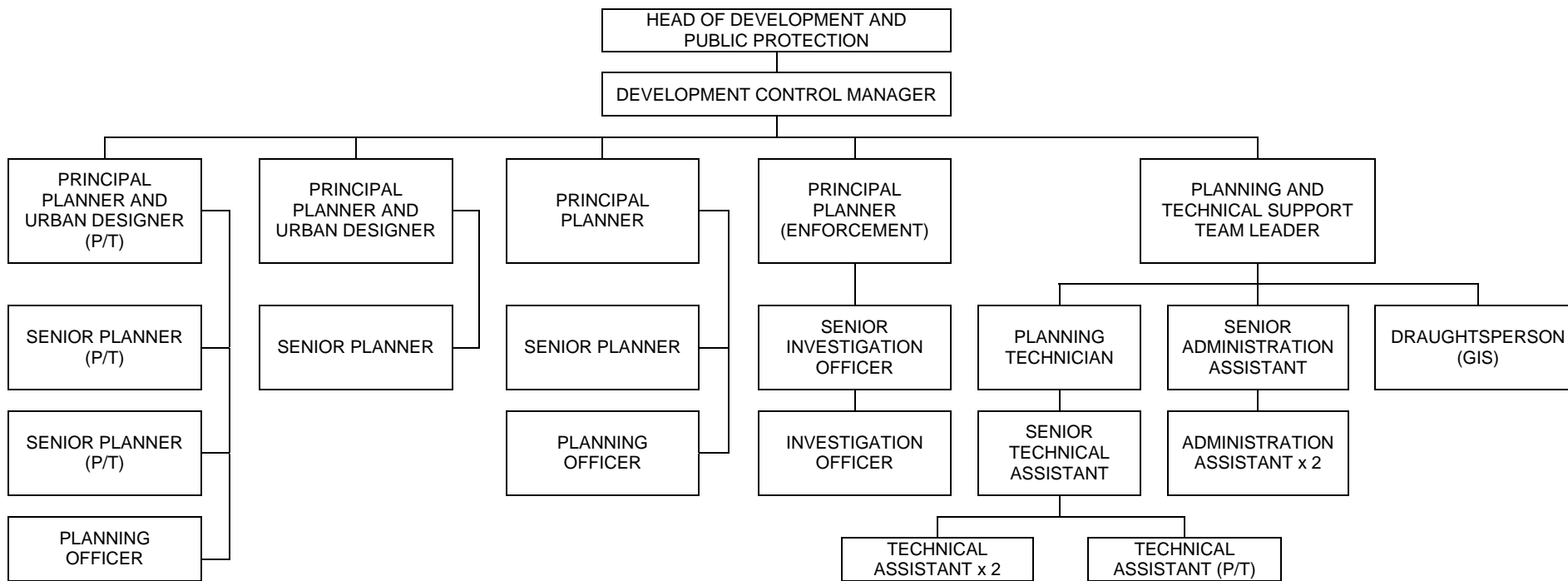


Table 8.1

Development and Public Protection (Planning)



Development and Public Protection (Conservation)

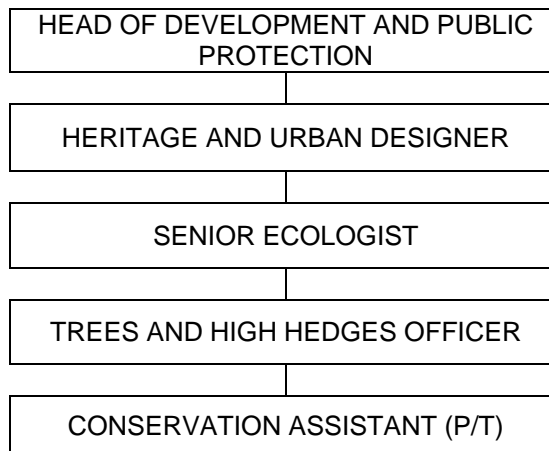


Table 8.3

Development and Public Protection (Forward Planning)

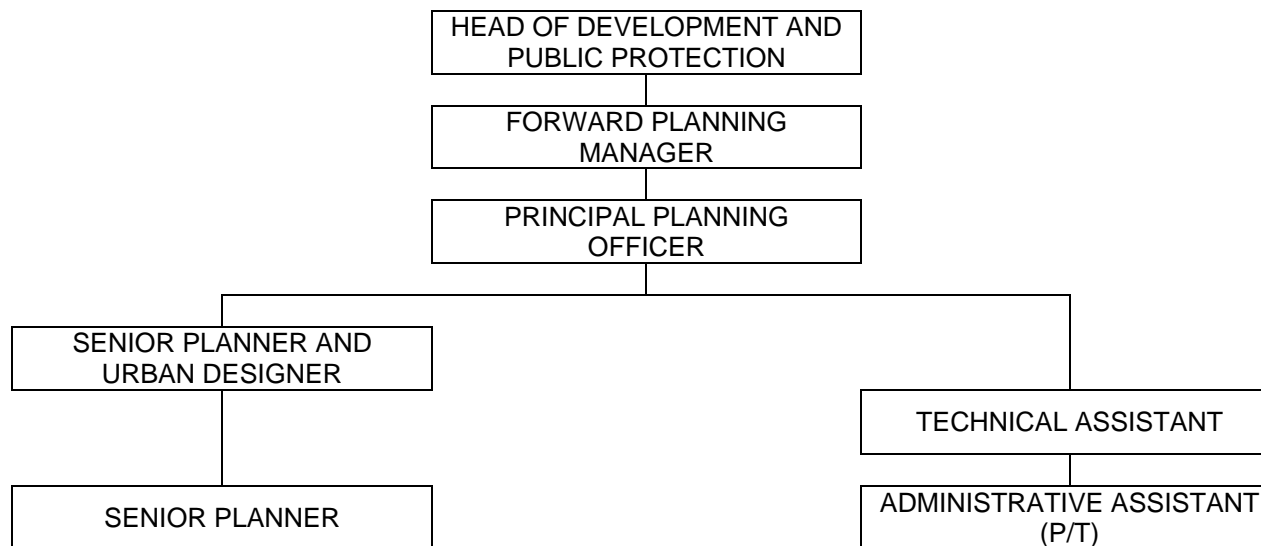


Table 8.4

Development and Public Protection (Building Control)

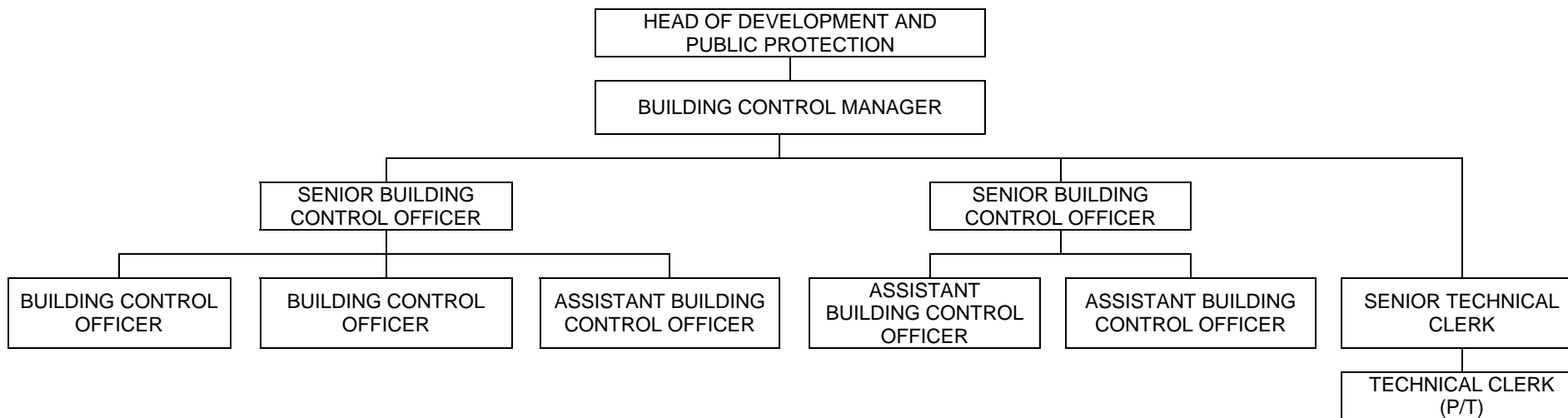


Table 8.5

Development and Public Protection (Environmental Health)

